

TECHNICAL SPECIFICATION

LOCKERS IN MELAMINE MV, MT, MM, MC, MP, MB AND MZ SERIES

Characteristics

1

Made of médium density fiber panel of 16 mm thickness, covert with decorative paper, impregnated with melamine resins. Body in white melamine mdl super at two faces.

Doors in melamine of one design at two faces.

Back panel made of perforated tablex completely framed.

Finish of the edges of body and doors in PVC.

Key lock with removable cylinder and master key.

Adjustable PVC legs of 150 mm height.

Aluminium bar with two a.b.s. hooks (Models MV and MT).

Screws made of stainless Steel A2 and hinges with stainless steel feather AISI 304.

Numeration plates included.

GENERAL CHARACTERISTICS OF THE AGGLOMERATE SUPPORT

Property	Test method	Requirement
Thickness (at one and the same panel and between panels)	UNE-EN 324-1	±0.3mm
Length (Between nominal and real)	UNE-EN 324-1	±5.0mm
Width (Between nominal and real)	UNE-EN 324-1	±5.0mm
Squared timber cut	UNE-EN 324-2	2.0mm/m
Content of humidity	UNE-EN 322	Between 5% y 13%
Density (Variation at the average density of a panel)	UNE-EN 323	±10%
Formaldehyd (Class E1)	UNE-EN 120	Less than 8 mg/100 g dry panel



TECHNICAL SPECIFICATION

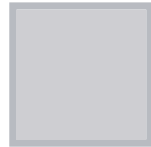
LOCKERS IN MELAMINE MV, MT, MM, MC, MP, MB AND MZ SERIES

Colours

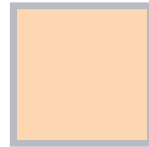
2



MBLANCO-1



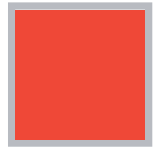
MV-157



MG-097



MY-115



MN-035



MW-035



MX-017



MZ-025



MA-100



MA-200



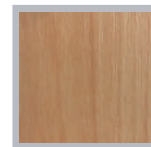
MH-021



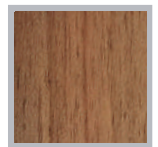
MM-168



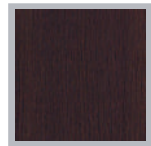
MA-035



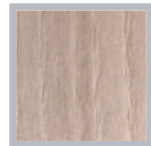
MM-240



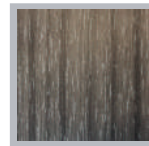
MM-500



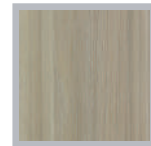
MM-100



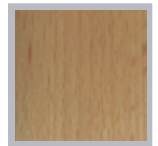
MM-150



MM-160



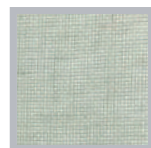
MM-600



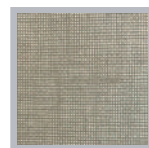
MM-650



MM-700



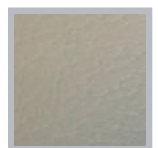
MM-800



MM-850



MM-900



MM-950

TECHNICAL SPECIFICATION

LOCKERS IN MELAMINE MV, MT, MM, MC, MP, MB AND MZ SERIES

Options

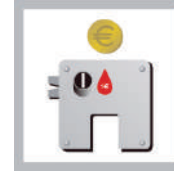
3



Padlockable Polyamide Lock (optional padlock)



Padlockable Metallic Lock (optional combination padlock)



Coin-operated Lock (coin-return)



Coin-operated Lock + Coin Collect Box (cash box, non coin-return)



Lock of 4 manual digits with emergency key



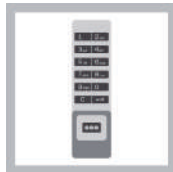
Electronic lock combination of 4 digits



Electronic lock combination of 4 digits



Electronic lock combination of 4 digits



Electronic lock combination of 4 digits



Electronic lock combination of 4 digits



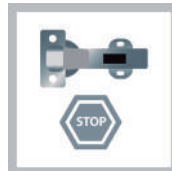
Lock of proximity



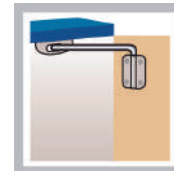
Lock of proximity



Lock of proximity



Hinge with brake



Door opening limiter 90°



Melamine socle



Decorative end panel



Slope top



Closing for padlock



Bracelet of nylon



Elastic bracelet



HPL doors



TECHNICAL SPECIFICATION

LOCKERS IN MELAMINE MV, MT, MM, MC, MP, MB AND MZ SERIES

Combinations and dimensions

4

MV SERIES

MV-30/1
COD. 99276



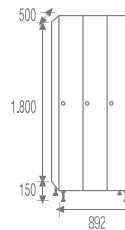
32Kg. - 0,28m³

MV-30/2
COD. 99278



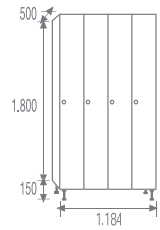
54Kg. - 0,54m³

MV-30/3
COD. 99279



77Kg. - 0,80m³

MV-30/4
COD. 99280



99Kg. - 1,07m³

MV-40/1
COD. 99283



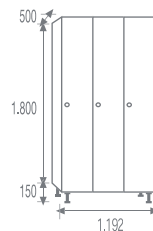
36Kg. - 0,37m³

MV-40/2
COD. 99284



62Kg. - 0,72m³

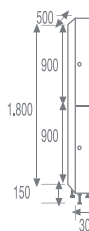
MV-40/3
COD. 99285



89Kg. - 1,07m³

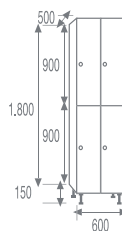
MT SERIES

MT-30/1
COD. 99277



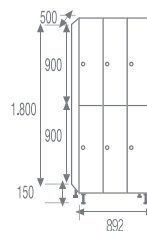
33Kg. - 0,28m³

MT-30/2
COD. 99578



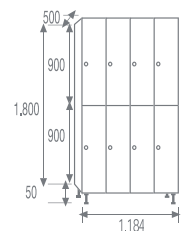
55Kg. - 0,54m³

MT-30/3
COD. 99579



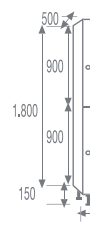
78Kg. - 0,80m³

MT-30/4
COD. 99580



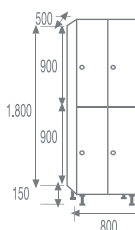
101Kg. - 1,07m³

MT-40/1
COD. 99352



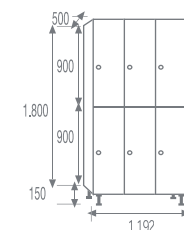
36Kg. - 0,37m³

MT-40/2
COD. 99402



63Kg. - 0,72m³

MT-40/3
COD. 99403



90Kg. - 1,07m³



TECHNICAL SPECIFICATION

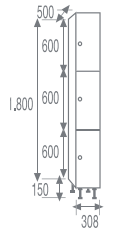
LOCKERS IN MELAMINE MV, MT, MM, MC, MP, MB AND MZ SERIES

Combinations and dimensions

4

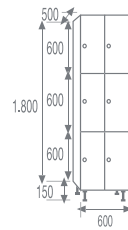
MM SERIES

MM-30/1
COD. 99350



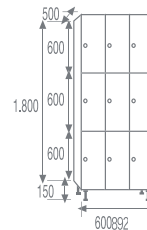
35Kg. - 0,28m³

MM-30/2
COD. 99412



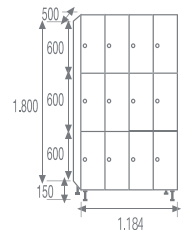
60Kg. - 0,54m³

MM-30/3
COD. 99413



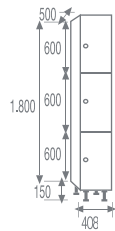
84Kg. - 0,80m³

MM-30/4
COD. 99414



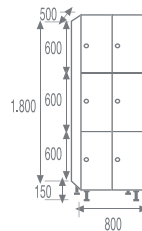
110Kg. - 1,07m³

MM-40/1
COD. 99353



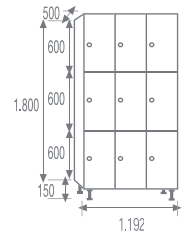
39Kg. - 0,37m³

MM-40/2
COD. 99415



68Kg. - 0,72m³

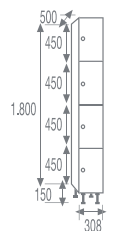
MM-40/3
COD. 99416



98Kg. - 1,07m³

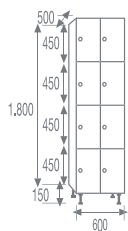
MC SERIES

MC-30/1
COD. 99351



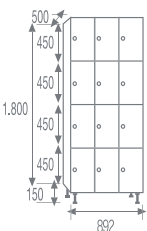
37Kg. - 0,28m³

MC-30/2
COD. 99422



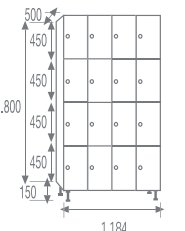
64Kg. - 0,54m³

MC-30/3
COD. 99423



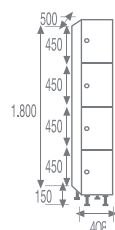
91Kg. - 0,80m³

MC-30/4
COD. 99424



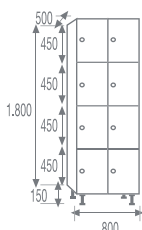
118Kg. - 1,07m³

MC-40/1
COD. 99354



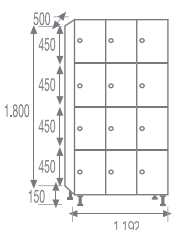
42Kg. - 0,37m³

MC-40/2
COD. 99425



74Kg. - 0,72m³

MC-40/3
COD. 99426



106Kg. - 1,07m³



TECHNICAL SPECIFICATION

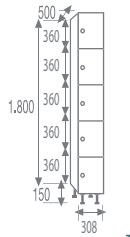
LOCKERS IN MELAMINE MV, MT, MM, MC, MP, MB AND MZ SERIES

Combinations and dimensions

4

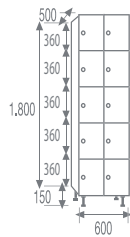
MP SERIES

MP-30/1
COD. 99551



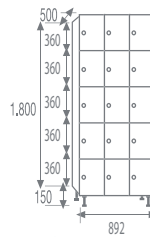
39Kg. - 0,28m³

MP-30/2
COD. 99552



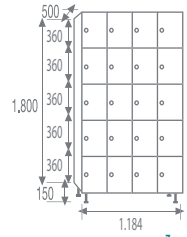
68Kg. - 0,54m³

MP-30/3
COD. 99553



97Kg. - 0,80m³

MP-30/4
COD. 99555



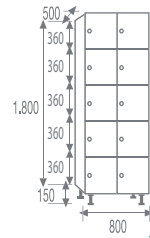
126Kg. - 1,07m³

MP-40/1
COD. 99554



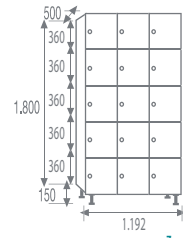
44Kg. - 0,37m³

MP-40/2
COD. 99559



79Kg. - 0,72m³

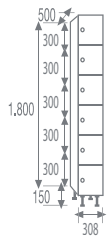
MP-40/3
COD. 99560



114Kg. - 1,07m³

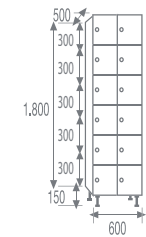
MB SERIES

MB-30/1
COD. 99651



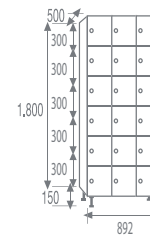
41Kg. - 0,28m³

MB-30/2
COD. 99652



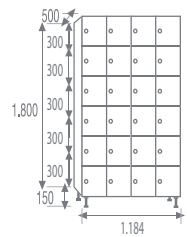
72Kg. - 0,54m³

MB-30/3
COD. 99653



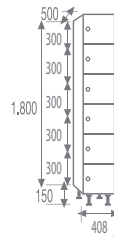
103Kg. - 0,80m³

MB-30/4
COD. 99655



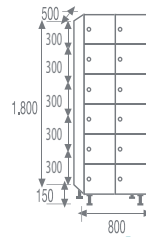
135Kg. - 1,07m³

MB-40/1
COD. 99654



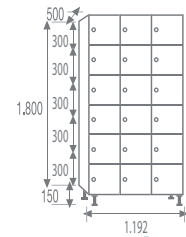
47Kg. - 0,37m³

MB-40/2
COD. 99659



84Kg. - 0,72m³

MB-40/3
COD. 99660



122Kg. - 1,07m³



TECHNICAL SPECIFICATION

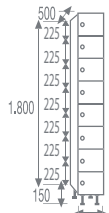
LOCKERS IN MELAMINE MV, MT, MM, MC, MP, MB AND MZ SERIES

Combinations and dimensions

4

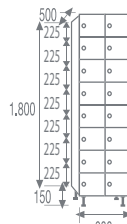
MZSERIES

MZ-30/1
COD. 99851



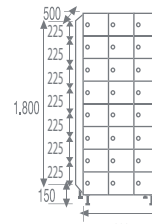
45Kg. - 0,28m³

MZ-30/2
COD. 99852



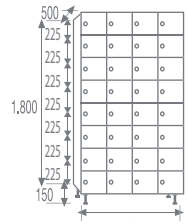
81Kg. - 0,54m³

MZ-30/3
COD. 99853



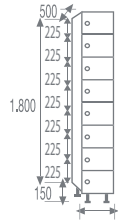
116Kg. - 0,80m³

MZ-30/4
COD. 99855



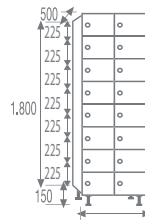
152Kg. - 1,07m³

MZ-40/1
COD. 99854



52Kg. - 0,37m³

MZ-40/2
COD. 99859



94Kg. - 0,72m³

MZ-40/3
COD. 99860



138Kg. - 1,07m³